

# HC6

## High Power Resonant Capacitors



### FEATURES

High AC Voltage - High Current

### APPLICATIONS

Induction Heating - Tank Circuits

KVAR	600
CAPACITANCE TOLERANCE	+/-10%
MAXIMUM CORE TEMPERATURE	+85°C
SURFACE TEMPERATURE	+45°C (Above 45°C the KVAR rating must be de-rated by 2.25%/°C)
CONSTRUCTION	Self-healing
SELF INDUCTANCE	< 5 nH
DIELECTRIC	Polypropylene
FLAME RETARDANT	UL94V0

### Standard Part Listing

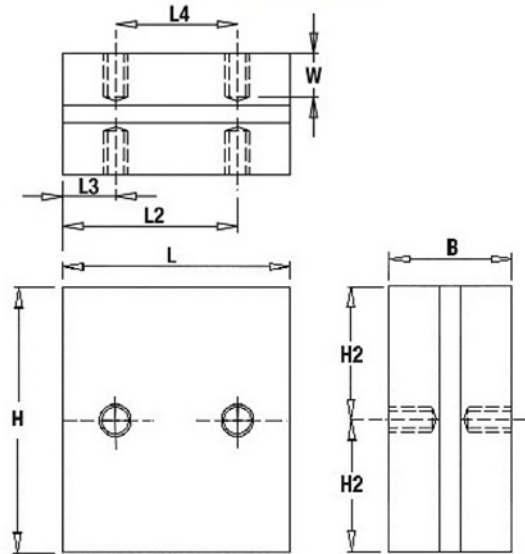
Capacitance (µF)	VAC	IC part number	Maximum RMS current (A)	MAX power kvar	Frequency range (kHz)	ESR (mΩ) 100kHz, +25°C	Dimensions (mm)			Terminal Style
							B	H	L	
0.33	1000	<a href="#">334HC6102K2EM8</a>	600	600	290	1.0	30.2	66	56	2EM8
0.50	800	<a href="#">504HC6102K2EM8</a>	750	600	299	0.9	30.2	66	56	2EM8
0.66	800	<a href="#">664HC6102K2EM8</a>	750	600	226	0.8	30.2	66	56	2EM8
1.33	700	<a href="#">135HC6900K2EM8</a>	950	600	148-179	0.3	30.2	66	56	2EM8
2.60	600	<a href="#">265HC6700K2EM8</a>	1050	600	101-112	0.3	30.2	66	56	2EM8
5.00	500	<a href="#">505HC6500K2EM8</a>	1200	600	76	0.2	30.2	66	56	2EM8
0.33	1000	<a href="#">334HC6102K4TM6</a>	600	600	290	1.0	30.2	60	60	4TM6
0.50	800	<a href="#">504HC6102K4TM6</a>	750	600	299	0.9	30.2	60	60	4TM6
0.66	800	<a href="#">664HC6102K4TM6</a>	750	600	226	0.8	30.2	60	60	4TM6
1.33	700	<a href="#">135HC6900K4TM6</a>	950	600	148-179	0.3	30.2	60	60	4TM6
2.60	600	<a href="#">265HC6700K4TM6</a>	1050	600	101-112	0.3	30.2	60	60	4TM6
5.00	500	<a href="#">505HC6500K4TM6</a>	1200	600	76	0.2	30.2	60	60	4TM6

# HC6

## High Power Resonant Capacitors

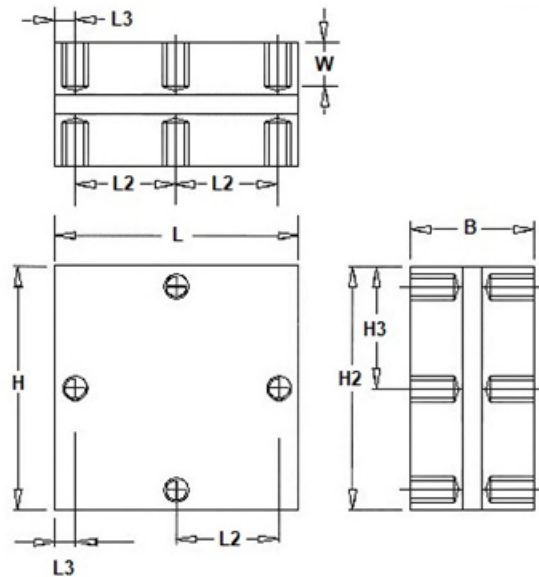


### LEAD STYLE: 2EM8



L	H	B	H2	L2	L3	L4	W
56±0.5	66±0.5	30.2±0.1	33	43	13	30	10±0.5
Mounting Holes: M8x1.25 tap fitted with SS helicoil							
Tightening torque: 15Nm MAX							

### LEAD STYLE: 4TM6



L	H	B	H2	H3	L2	L3	W
60±0.5	60±0.5	30.2±0.1	55	30	25	5	10±0.5
Mounting Holes: M6x1 tap fitted with SS helicoil							
Tightening torque: 15Nm MAX							

# HC6

## High Power Resonant Capacitors



### Frequency Derating

— Voltage — Current — Power

