



AXIAL LEAD TAPING SPECIFICATIONS

GENERAL SPECIFICATIONS

BODY SIZE: Maximum Diameter: (13mm)

PITCH: Standard: (5.0mm)
(10.2mm)
(15.2mm)*

TAPE LEADER: A (300mm) minimum length leader is provided before the first capacitor and after the last capacitor.

INTERRUPTION OF SEQUENCE: No consecutive capacitors may be absent. Total empty spaces <0.1% of reel.

SPLICES: Spliced tape strength is equal to non-spliced tape.

Staples will not be used for splicing.

Splice offset <(0.80mm)

Splice overlap >(50.8mm)

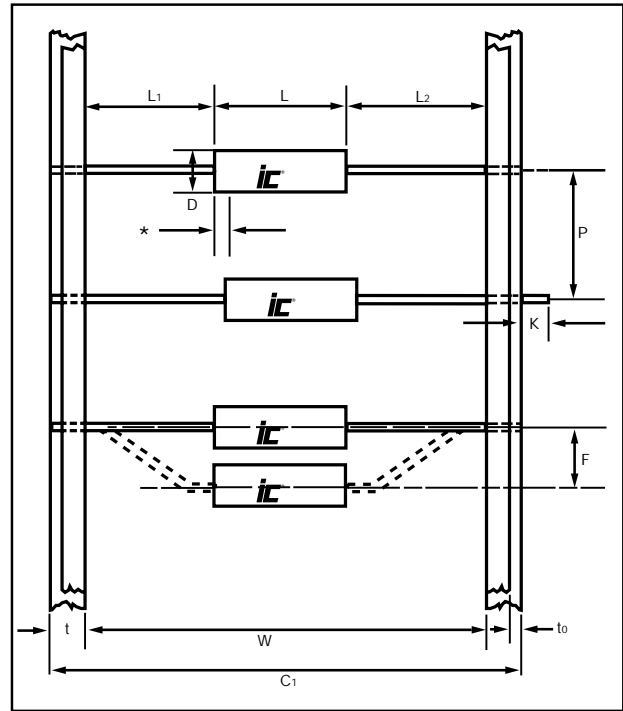
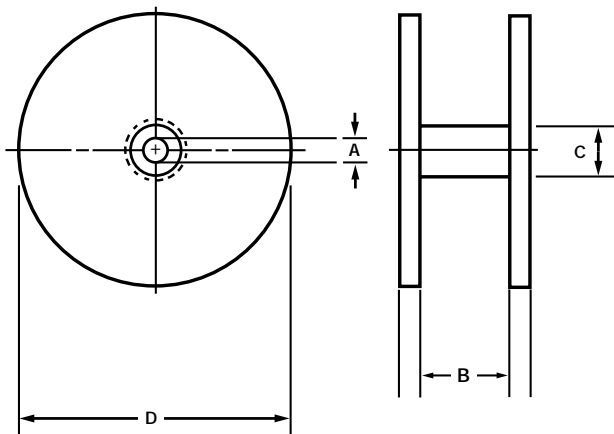
REFERENCE STANDARDS: EIA RS296E

BODY SIZE vs. PITCH		mm		
Body Diameter (D)	≤5.0	≤10.0	>10.0	
Pitch* (P)	5.0	10.0	15.0	
Pitch Tolerance	±0.5	±0.5	±0.5	

*NOTES:
Maximum body diameter must be less than nominal component pitch
Please contact IC directly for all special requirements

TYPICAL PACKAGING QUANTITIES	
Diameter (Max.)	Reel Quantity
<5.0	2,000
<7.0	1,500
<10.0	1,000
<13.0	400

REEL PACKAGING



LEAD TAPING SPECIFICATIONS		mm		
Body Length	≤16.5	≤28.45	>28.45	
Inside Tape (W)	52.4	63.5	73.0	
Tolerance Inside (W)	±1.5			
Lead Extension (K)	0.80 Max.			
Centering Tolerance	±1.40			
Lead into Tape	1/2 t Min.			
Tape Width (t)	5.0 to 6.35			
Exposed Adhesive (t _a)	.80 Max.			
Lead Bend Alignment (F)	1.2 Max.			
Overall Width (C ₁)	123.5 Max			

REEL DIMENSIONS (mm)	MIN.	MAX.
Outside Diameter (D)	76.2	355.6
Core Diameter (C)	34.9	92.1
Arbor Hole Diameter (A)	13.9	38.1
Inside Flange (B)	1.5 to 8.0 over C ₁ Dim.	

NOTE: Dimensions will vary according to specific capacitor styles, quantities and customer specifications. IC will furnish specific details upon request.

