

APPLICATIONS

- UPS Battery backup
- Medical devices
- Wind turbines
- Hybrid drive trains
- Automobile subsystems
- Rail systems

FEATURES

- High Capacitance
- Long Life
- Low ESR
- High power density
- Hi Pulse power
- 1,000,000 life cycles
- Threaded and weldable terminals
- RoHS compliant

SPECIFICATIONS

Operating Temperature Range		-40°C to +65°C	
Storage Temperature		-40°C to +70°C	
Capacitance Tolerance		+20%/ -0% @ 20°C	
Surge voltage	WVDC	2.7	
	SVDC	2.85	
Maximum Current		See standard part listing	1 second discharge to ½ WVDC
Leakage Current		See standard part listing	72 hours, 25°C
Life time		10 years	
		Capacitance change	<30% of initially measured values
		ESR	<200% of initially measured values
		Leakage current	< specified maximum value
Life cycles (25°C) 1 cycle= Charge to WVDC for 20s, constant voltage charging for 10s, discharge to ½ WVDC for 20s, rest for 10 s		1,000,000 cycles	
		Capacitance change	<30% of initially measured values
		ESR	<200% of initially measured values
		Leakage current	< specified maximum value

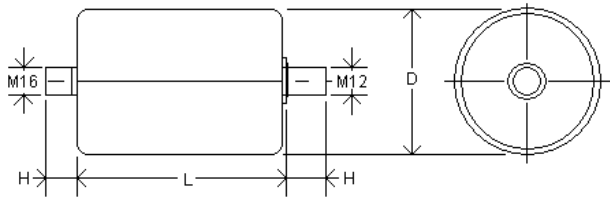
DCA

Super Capacitors

Standard Part Listing

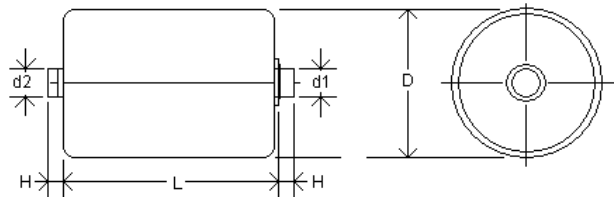
Cap (F)	VDC	IC PART NUMBER	MAX current (A)	ESR AC 1kHz (mΩ)	ESR DC Max (mΩ)	Max stored energy (Wh)	LC (mA)	Specific Energy Gravimetric Density (Wh/kg)	Specific Energy Volumetric Density (Wh/ml)	Specific power gravi Metric (kW/kg)	Specific Power volu Metric (kW/l)	Weight (grams)	Volume (mL)	Dims DxL (mm)
650	2.7	657DCA2R7RT	631	.5	.6	.658	1.5	3.134	4.404	14.464	20.327	210	149.432	60.2x52.5
650	2.7	657DCA2R7RW	631	.5	.6	.658	1.5	3.210	4.490	14.817	20.722	205	146.585	60.2x51.5
1200	2.7	128DCA2R7RT	1028	.4	.48	1.215	2.7	4.263	5.692	13.322	17.786	285	213.472	60.2x75
1200	2.7	128DCA2R7RW	1028	.4	.48	1.215	2.7	4.339	5.768	13.560	18.027	280	210.627	60.2x74
1600	2.7	168DCA2R7RT	1304	.34	.41	1.62	3	4.765	6.618	13.074	18.159	340	244.783	60.2x86
1600	2.7	168DCA2R7RW	1304	.34	.41	1.62	3	4.836	6.696	13.269	18.373	335	241.937	60.2x85
2000	2.7	208DCA2R7RT	1627	.28	.33	2.025	4.2	5.127	6.907	13.982	18.838	395	293.170	60.2X103
2000	2.7	208DCA2R7RW	1627	.28	.33	2.025	4.2	5.192	6.907	14.161	18.838	390	293.170	60.2X103
3000	2.7	308DCA2R7RT	2275	.22	.26	3.038	5.2	5.678	7.677	13.102	17.717	535	395.638	60.2x139
3000	2.7	308DCA2R7RW	2275	.22	.26	3.038	5.2	5.731	7.733	13.226	17.846	530	392.791	60.2x138

Threaded terminals (Code T)



Cap (F)	D (+/-0.2)	L (+/-0.5)	H (+/- .125)
650	60.2	52.5	13
1200	60.2	75	13
1600	60.2	86	13
2000	60.2	103	13
3000	60.2	139	13

Weldable terminals (Code W)



Cap (F)	D (+/-0.2)	L (+/-0.5)	H (+/- .125)	d1 (+O-0.05)	d2 (+O-0.05)
650	60.2	51.5	3	14.9	14
1200	60.2	74	3	14.9	14
1600	60.2	85	3	14.9	14
2000	60.2	102	3	14.9	14
3000	60.2	138	3	14.9	14

